



# SEVEN™

THE PREMIUM LINE

## Tractor Mounted PTO Drive Fixed Hammer Mulchers.

*Capable of Producing  
Classe I / Category I Mulch\*  
to meet the most demanding  
mulching specifications.*

*3 models and various  
widths to choose from*



**TFK**

For Tractors 100-180 hp



**TFZ**

For Tractors 170-250 hp



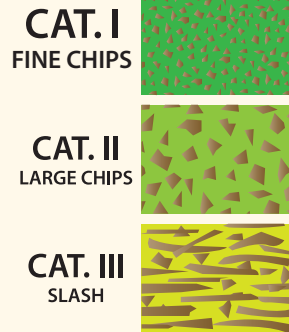
**TFI**

For Tractors 200-360 hp



## BENEFITS OF THE SEVEN™ TT-SERIES TRACTOR MOUNTED MULCHERS:

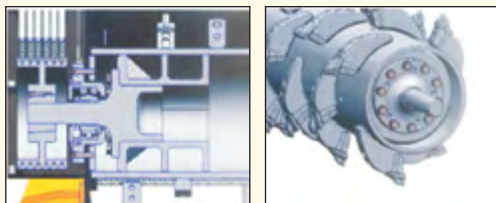
- Capable of producing Classe I / Category I Mulch to meet the most demanding mulching contract specifications.



The Seven TT-Series mulchers feature a large diameter rotor with a close ratio hammer configuration, resulting in long hammer life, increased grinding capacity and the production of fine “Classe I/Category I mulch” (see chart). A fine mulch gives good ground cover and returns to nature quickly.

- The Seven TT-Series mulchers feature oversize roller bearings on the main shaft, a welded body of **DOMEX®** steel and skid pads made from **HARDOX®** steel giving the mulcher a long and productive life in the toughest of conditions. A hydraulically controlled gate ensures safe operation: gate is open for cutting and closed for mulching.

*Self-aligning roller bearings in rotor for assuming/absorbing possible misalignments during operation. Replaceable shafts in rotor, bolted with special safety system.*



***An ecological solution:  
mulching has proven environmental and economic advantages over the use of chemical sprays to control brush growth. Mulching eliminates the potential danger to the soil and water table.***



Gate open for cutting; closed for mulching.

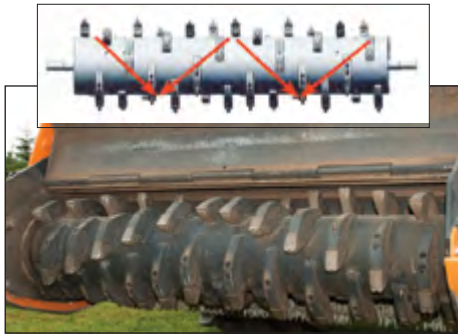


Fell and Mulch standing trees in one pass.



# SEVEN™ TT-Series PTO Drive Mulchers Engineered for Efficiency and Long Life.

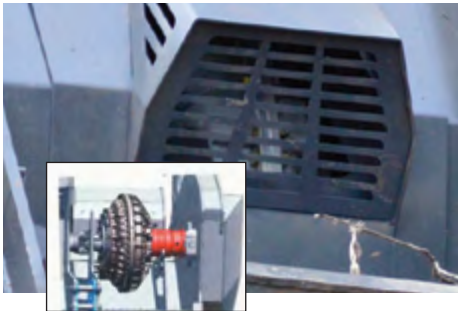
## FEATURES OF THE SEVEN™ TT-SERIES MULCHERS



- Large diameter rotor with unique carbide hammer configuration that reduces power consumption. Double helicoidal hammer arrangement proves highly efficient.



- Replaceable 45mm wide hammers made of hard alloys with carbide wear points and DuoBolt™ mounting (F03 Hammers on center rotor, F04 hammer on side).



- The Model TTFT features unique “Two stage carbide hammers”. These 55mm wide F05 and F06 hammers have two separate levels of carbide cutting surfaces and a reinforced forged steel anvil which attaches the hammer to the rotor. Research has found that when mulching with machines over 200 HP, the mulching properties change. This is why on “Seven” mulchers the hammers used on a 100 HP mulcher are not the same hammers used on the larger models.



- Welded mainframe with double layer of high strength cold forming **DOMEX®** S700 steel. Enclosed body system prevents debris from entering the internal components.
- VOITH hydraulic couplings are **optional** for soft and progressive start and shutdown in overloads. Special cooling system made in Germany.

- Aligned system of the gearbox ensures a perfect alignment of the transmission for any position of the machine.



- High performance drive belts or **Gates** poly chain.

- Mulching chamber with replaceable counterblades made from **HARDOX®** 450 wear resistant steel mounted in frame interior.

- Hydraulic hood with replaceable counterblades made from **HARDOX®** 450, wear resistant steel.

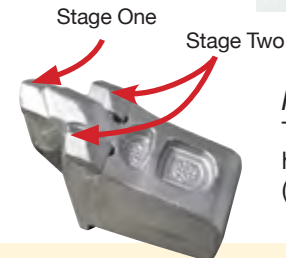


- 20 mm thick adjustable skid pads made from **HARDOX®** 450 wear resistant steel.

- Front quadruple chains curtain.

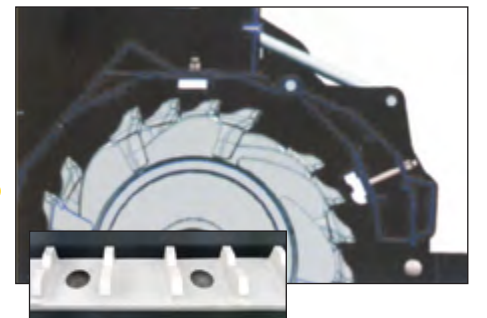


DuoBolt™ Mounting system



F05 & F06 Two stage hammers (TTFT model)

With the two stage hammer the central carbide point penetrates wood easier, the wider second carbide blade increases mulching action. The benefit of the two stage hammer is: increased mulching speed, with lower fuel consumption.



# SEVEN™ TT Series, PTO Drive Fixed Hammer Mulchers



**TTFK**

For Tractors 100-180 hp

**TTFZ**

For Tractors 170-250 hp


**TTFI**

For Tractors 200-360 hp

## Nine SEVEN™ TT Mulchers to Choose from:

MODEL	WORKING WIDTH cm (In)	OVERALL WIDTH cm (In)	WEIGHT kg (lbs)	HAMMERS				HP
				F03	F04	F05	F06	
<b>TTF-k-160</b>	160 (63)	205 (81)	1520 (3351)	34	2	0	0	100 - 180
<b>TTF-k-180</b>	180 (71)	225 (89)	1625 (3582)	42	2	0	0	100 - 180
<b>TTF-k-200</b>	200 (79)	245 (96)	1745 (3847)	48	2	0	0	100 - 180
<b>TTF-k-225</b>	225 (89)	270 (106)	1910 (4211)	54	2	0	0	100 - 180
<b>TTF-z-200</b>	200 (79)	249 (98)	2884 (6358)	54	2	0	0	170 - 250
<b>TTF-z-225</b>	225 (89)	274 (108)	3004 (6623)	54	2	0	0	170 - 250
<b>TTF-z-250</b>	250 (98)	299 (118)	3148 (6940)	60	2	0	0	170 - 250
<b>TTF-T-225</b>	225 (89)	274 (108)	3178 (7006)	0	0	54	2	200 - 360
<b>TTF-T-250</b>	250 (98)	299 (118)	3295 (7264)	0	0	60	2	200 - 360

\*\* The weight of the machines is approximate, it refers to the standard version with any options and it may vary.  
The information and images contained in this document are to be considered reference values. The St. George Company reserves the right to make changes without notification.  
SEVEN® is a registered trademark of The St. George Company.  
© The St. George Company, 2015

See us on 

[www.facebook.com/thestgeorgecompany](http://www.facebook.com/thestgeorgecompany)



The St George Company Ltd. - [www.thestgeorgeco.com](http://www.thestgeorgeco.com)

20 Consolidated Drive, P.O. Box 430, Paris ON Canada, N3L 3T5

Telephone: (519) 442-2046 Fax: (519) 442-7191

[www.sgc-group.com](http://www.sgc-group.com)

**1-800-461-4299**