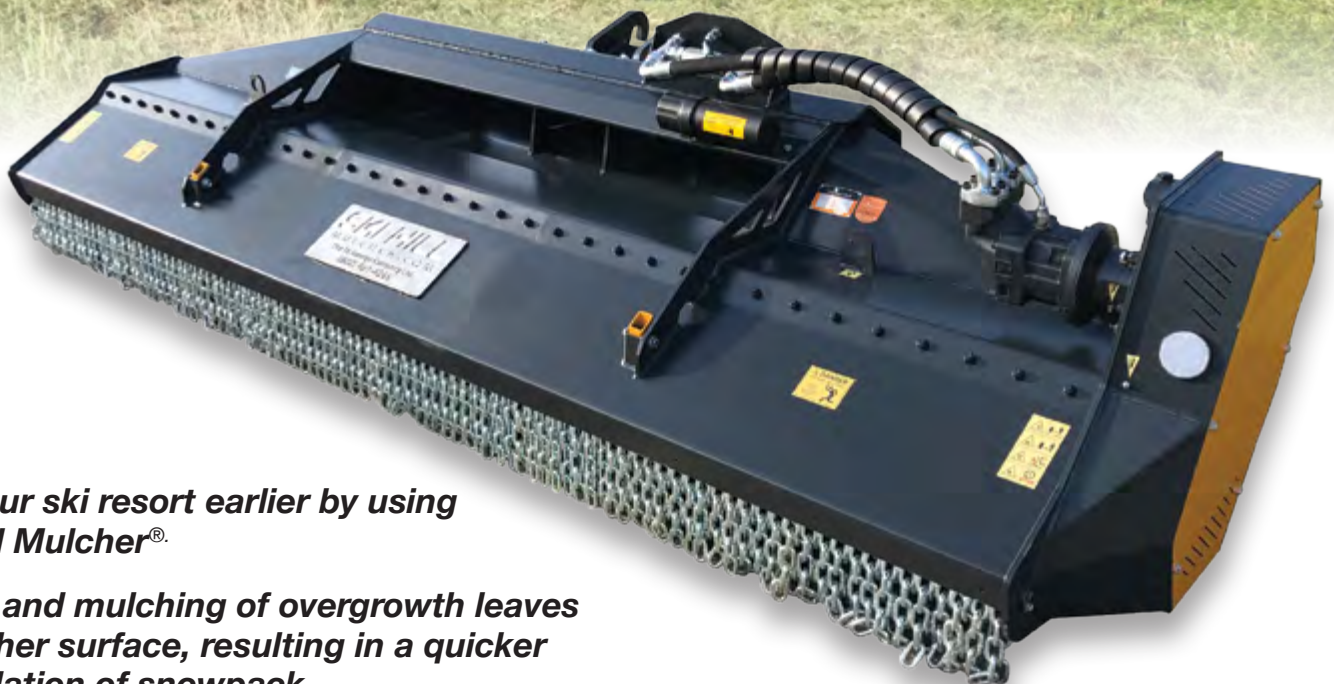


# SKI HILL

MULCHER®.COM

A heavy-duty mulching mower for grass and brush, designed to fit most snow grooming vehicles.



*Open your ski resort earlier by using a Ski Hill Mulcher®.*

*Mowing and mulching of overgrowth leaves a smoother surface, resulting in a quicker accumulation of snowpack.*

**skihillmulcher.com 1-800-461-4299**

# A robust Hammerflail™ mower/mulcher that allows for high performance work at high speeds.

## BENEFITS OF THE SKI HILL MULCHER®

- Open your resort earlier in the season by using a Ski Hill Mulcher®. Mowing/mulching the overgrowth on the hill before winter arrives will result in less snow pack cover needed to start the ski season.
- By using a Ski Hill Mulcher® you leave a better terrain on which to build the snow base”.
- Forged steel Hammerflails™ working with stationary counter knives allow for a fine mulched finished surface.
- Reliable hydraulic/belt drive allows for quiet performance.
- Full length rear roller with height adjustment allows for machine to follow contours of the ground.
- Will mulch material up to 10 cm (4") diameter.
- Fits most snow grooming vehicles with four different mounting hitch configurations available.
- The Ski Hill Mulcher® features oversize roller bearings on the main shaft, a welded body of **STRENX™** Performance steel giving the mulcher a long and productive life in the toughest of conditions.

***An ecological solution:  
mulching has proven environmental and  
economic advantages over the use of  
chemical sprays to control brush growth.  
Mulching eliminates the potential danger  
to the soil and water table.***



# HEAVY DUTY • RELIABLE • EFFICIENT

## FEATURES OF THE SKI HILL MULCHER®

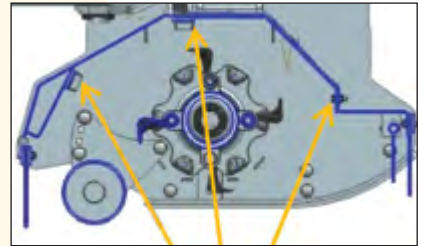


- Massive 5 lb floating forged hammerflails with 27 mm (1-1/6") machined bolts for strength and smooth operation.

Replaceable heavy duty forged swinging hammers on a large diameter rotor.



Three sets of full length forged steel replaceable "Counter knives" assist with hammerflails to produce a fine mulch.



- Six belt drive (or optional Polychain) ensures quiet efficient power transfer.



Full length rear roller, with height adjustment allows for machine to follow the contours of the ground. Also full length rubber flap for additional safety



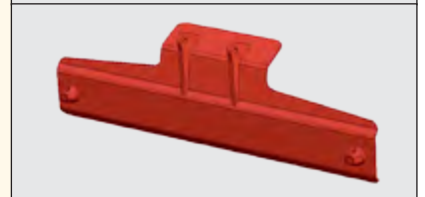
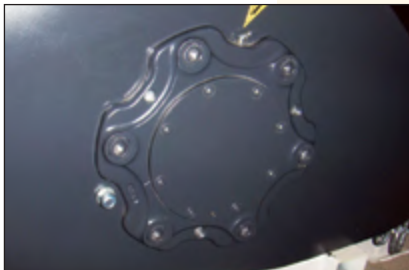
- Full front chain curtain protection.



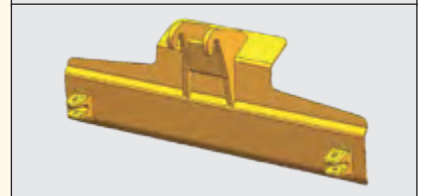
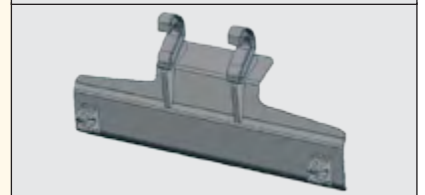
Several hitch configurations available, to fit most popular brands of snow grooming machines.



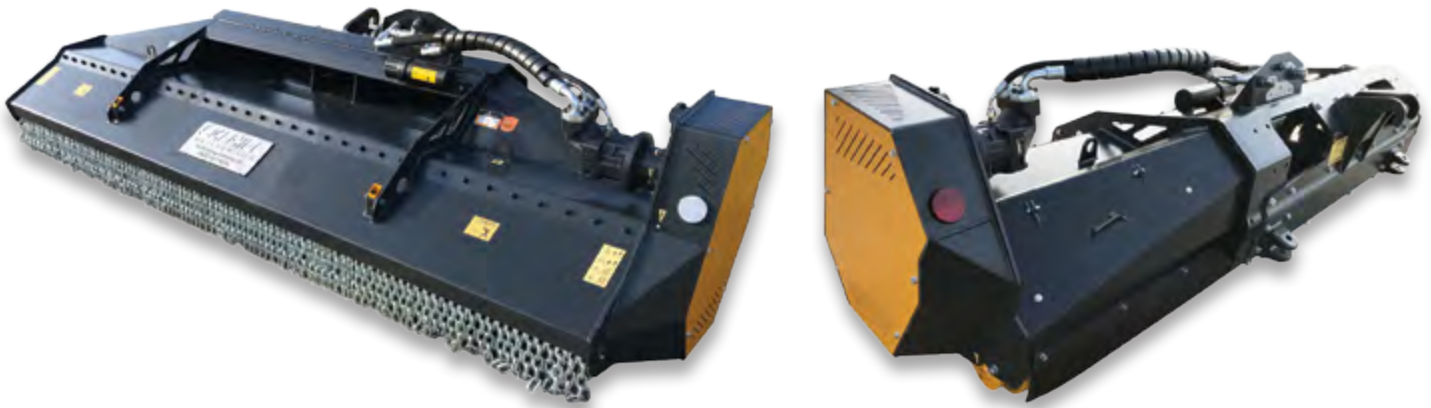
- External loading oversize roller bearings on rotor for long life.



- A welded body of **STRENX™** Performance steel.



# Ski Hill Mulcher® Ideal for Hillside Mowing & Mulching



## Ski Hill Mulcher® Specifications

<b>Working width</b>	350 cm, 138 in (other sizes available)
<b>Overall width</b>	370 cm, 146 in (other sizes available)
<b>Depth</b>	130 cm, 51 in
<b>Height</b>	120 cm, 47 in
<b>Weight*</b>	1435 kg, 3164 lb
<b>Standard flails #</b>	36
<b>Roller</b>	193 mm, 7.6 in
<b>kW min-max</b>	74-97
<b>HP min-max</b>	100-130
<b>Pressure</b>	220 - 350 Bar

\*The weight of the machines is approximate, it refers to the standard version with any options and it may vary.  
The information and images contained in this document are to be considered reference values. The St. George Company reserves the right to make changes without notification.  
© The St. George Company, 2019

See us on 

[www.facebook.com/thestgeorgecompany](http://www.facebook.com/thestgeorgecompany)



Steep slopes are no problem. The Ski Hill Mulcher® goes where ever your groomer goes.



**The St George Company Ltd. - [www.thestgeorgeco.com](http://www.thestgeorgeco.com)**

20 Consolidated Drive, P.O. Box 430, Paris ON Canada, N3L 3T5

Telephone: (519) 442-2046 Fax: (519) 442-7191

**[www.skihillmulcher.com](http://www.skihillmulcher.com)**

**1-800-461-4299**